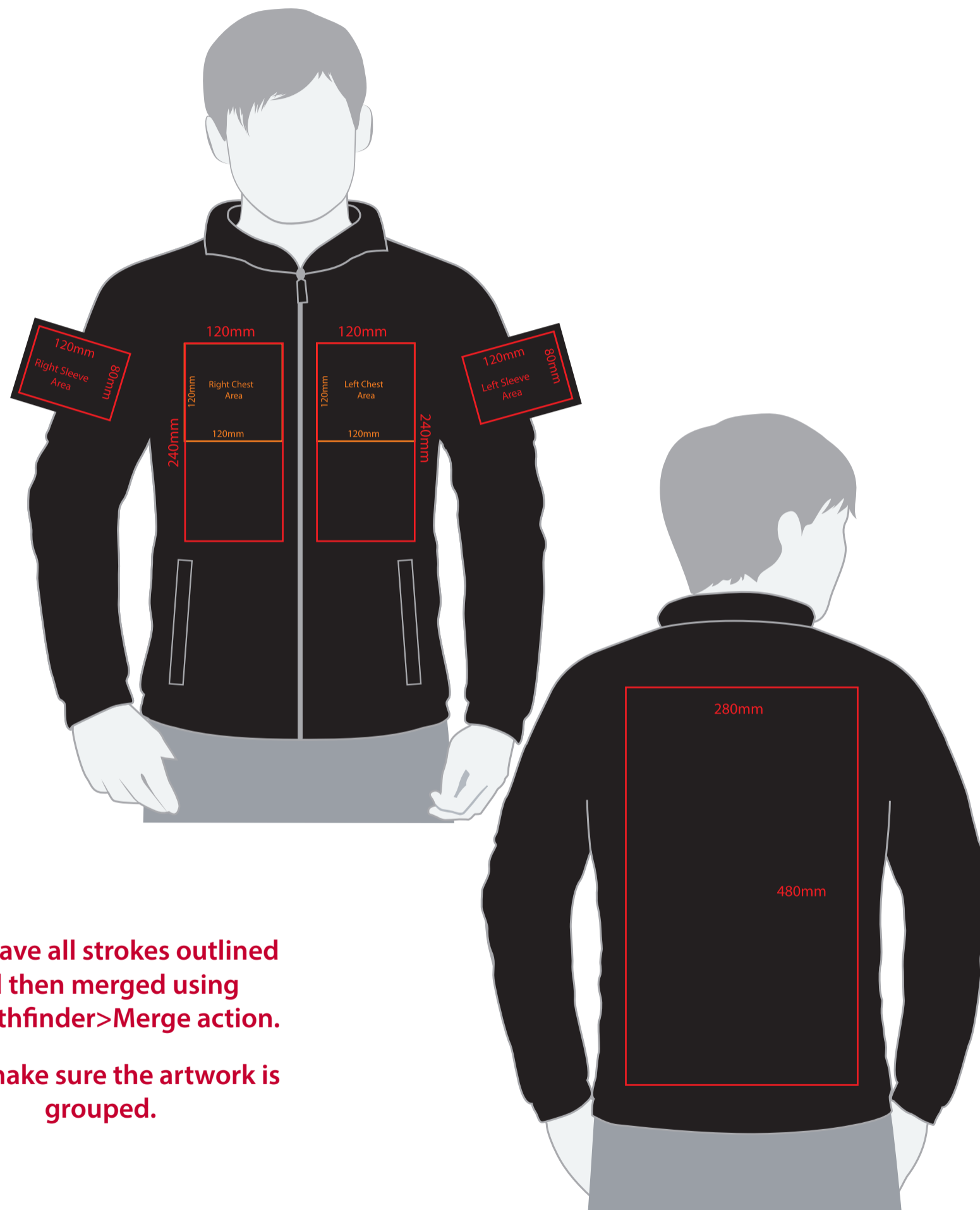


# YOUR VISUAL PROOF (1 of 2)



Must have all strokes outlined and then merged using the Pathfinder>Merge action.

Then make sure the artwork is grouped.

Artwork not to scale (to be used as a guide only) Please see page 2 for actual artwork size.

Order Reference	XXXXXX
Date created	xx/xx/xx
Created by	xx

Product	194854
Colour	XXXXXX
Branding	Embroidered

## Artwork Advisories

This template is not to scale and is to be used as a **guide for print size & positioning only.**

**Please note the actual embroidery may differ slightly once digitised.**

Pantone/thread colours are matched from universal swatch books. However, **production processes may at times have a slight effect on how colours appear on garments.**

It is the customer's responsibility to ensure that the proof is correct in all areas. Please be sure to double-check spelling, grammar, layout and design before approving artwork. **Due to the variation in monitor colours and adjustments, PDF proofs may not provide an accurate colour representation of the final product & printed work.** Once artwork is approved, your order will be processed based on the above unless any amendments are made. All orders are subject to our terms and conditions.

**Please email all approvals/amends to your order processor.**

# YOUR VISUAL PROOF (2 of 2)



<b>Order Reference</b>	xxxxxxx
<b>Date created</b>	xx/xx/xx
<b>Created by</b>	xx

<b>Print position</b>	xxxx
<b>Print area</b>	xx x xxmm
<b>Logo size</b>	xx x xxmm
<b>Branding</b>	Embroidered

## Embroidery (Madeira Thread) Colours



Visual Scale 100%