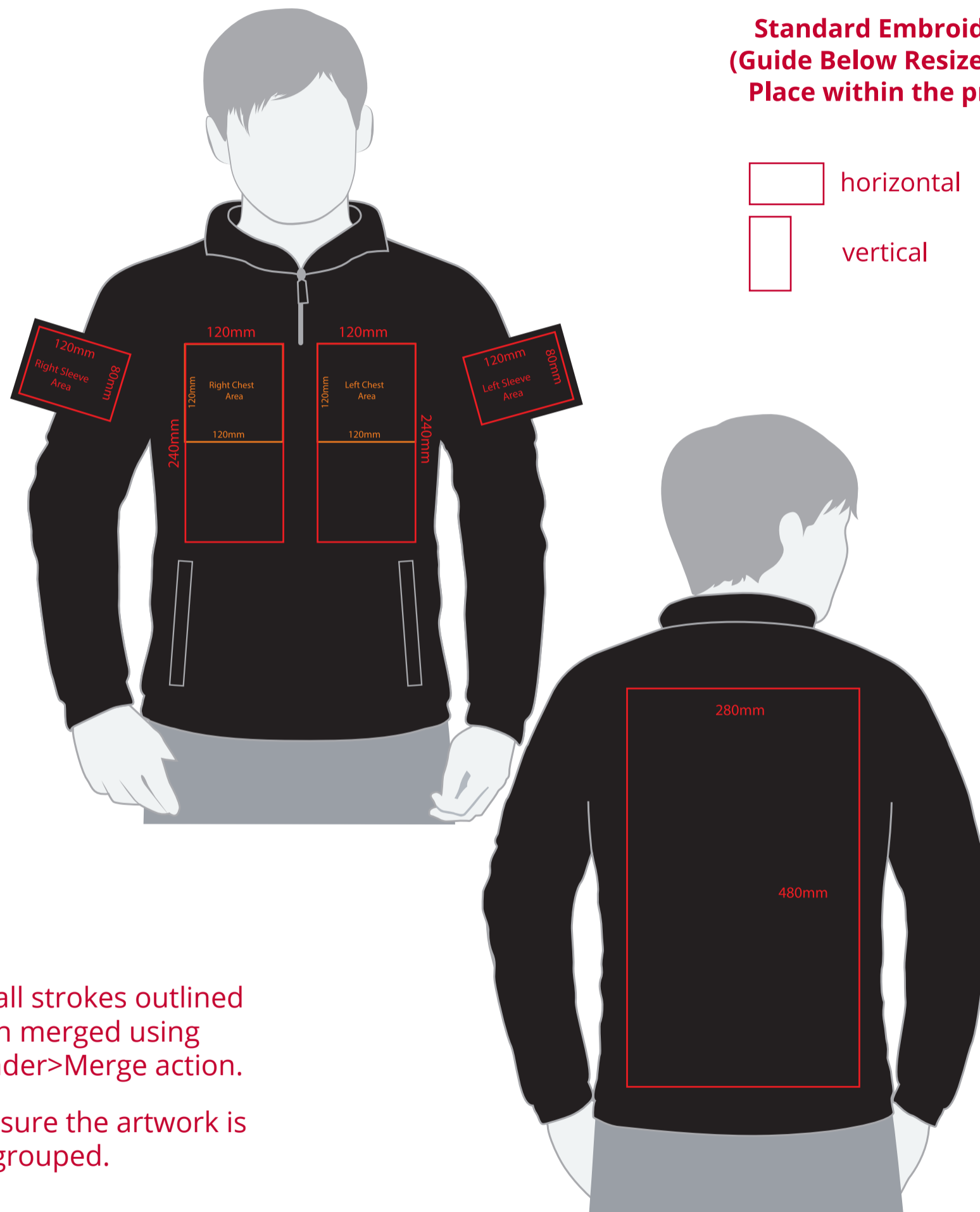


# YOUR VISUAL PROOF (1 of 2)

Order Reference      xxxxxx  
Date created        xx/xx/xx  
Created by            xx



Product              210130  
Colour                XXXXXX  
Branding             Embroidered

## Artwork Advisories

This template is not to scale and is to be used as a guide for print size & positioning only.

Please note the actual embroidery may differ slightly once digitised.

Pantone/thread colours are matched from universal swatch books. However, production processes may at times have a slight effect on how colours appear on garments.

It is the customer's responsibility to ensure that the proof is correct in all areas. Please be sure to double-check spelling, grammar, layout and design before approving artwork. **Due to the variation in monitor colours and adjustments, PDF proofs may not provide an accurate colour representation of the final product & printed work.** Once artwork is approved, your order will be processed based on the above unless any amendments are made. All orders are subject to our terms and conditions.

**Please email all approvals/amends to your order processor.**

Must have all strokes outlined and then merged using the Pathfinder>Merge action.

Then make sure the artwork is grouped.

Artwork not to scale (to be used as a guide only)

Please see page 2 for actual artwork size.

# YOUR VISUAL PROOF (2 of 2)



Order Reference	xxxxxx
Date created	xx/xx/xx
Created by	xx

Print position	xxxx
Print area	90 x 50 mm
Logo size	xx x xxmm
Branding	Embroidered

## Embroidery (Madeira Thread) Colours

