

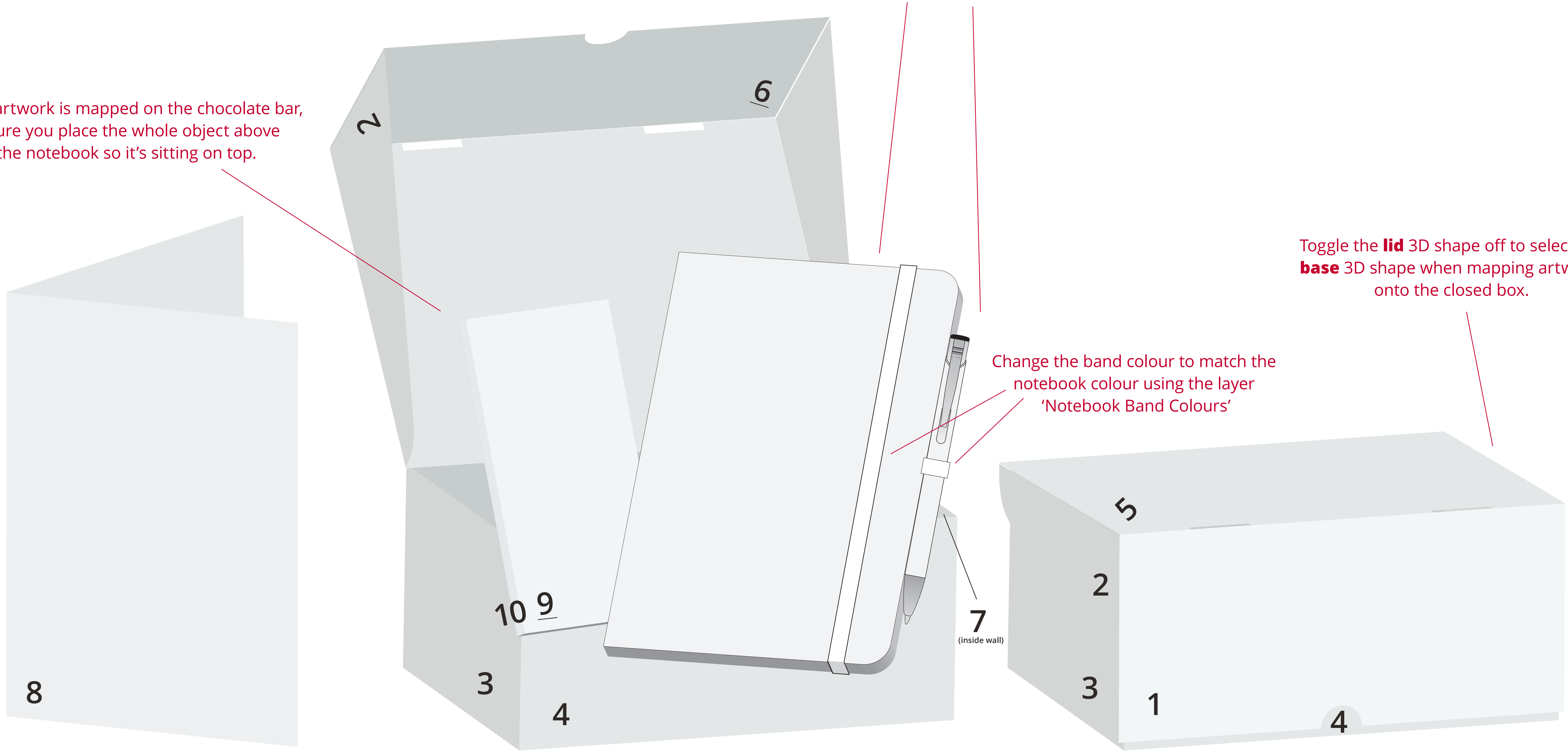
YOUR VISUAL PROOF (1 of 6)

Once artwork is mapped on the chocolate bar, ensure you place the whole object above the notebook so it's sitting on top.

To map artwork onto the notebook and pen, toggle off the 'Product Layer - Book / Pen' layer panel and use the 3D shapes underneath.

Toggle the **lid** 3D shape off to select the **base** 3D shape when mapping artwork onto the closed box.

Change the band colour to match the notebook colour using the layer 'Notebook Band Colours'



Order Reference	xxxxxx
Date created	xx/xx/xx
Created by	xx

Product	234568
Box colour	White
Greeting card col.	White
Notebook colour	White
Pen colour	White
Chocolate bar col.	White
Branding	Spot Colour & Full Colour

Artwork Advisories

This template is not to scale and is to be used as a guide for print size & positioning only. Full colour printed colours may differ when printed to the final product.

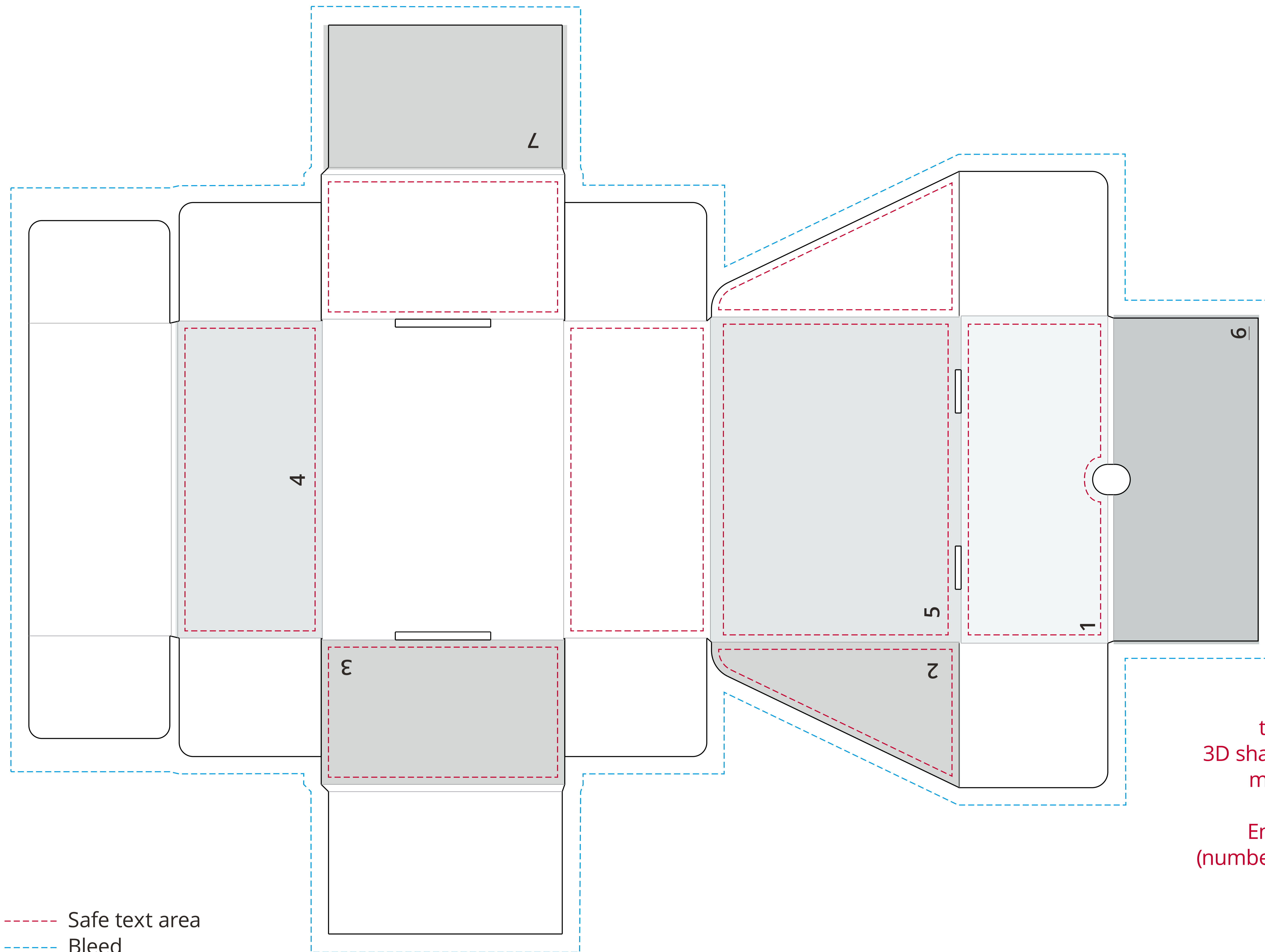
It is the customer's responsibility to ensure that the proof is correct in all areas. Please be sure to double-check spelling, grammar, layout and design before approving artwork. Due to the variation in monitor colours and adjustments, PDF proofs may not provide an accurate colour representation of the final product & printed work. Once artwork is approved, your order will be processed based on the above unless any amendments are made. All orders are subject to our terms and conditions.

Please email all approvals/amends to your order processor.

YOUR VISUAL PROOF (2 of 6)

Order Reference xxxxxx
Date created xx/xx/xx
Created by xx

Print area All Over Print
Logo size xx x xx mm
Branding Full Colour



- - - Safe text area
- - - Bleed
- Cut line
- Folds

Visual Scale 100%

Artwork WITH BACKGROUND

Use the numbered shapes below to clip copies of the artwork and match them to the correct sides of the 3D shapes on page 1, **rasterize** each section (high and transparent) make these into symbols and name them by the number.

Ensure the artwork has been mapped on the correct way. (numbers are on the same corners of each shape on page 1 and 2)

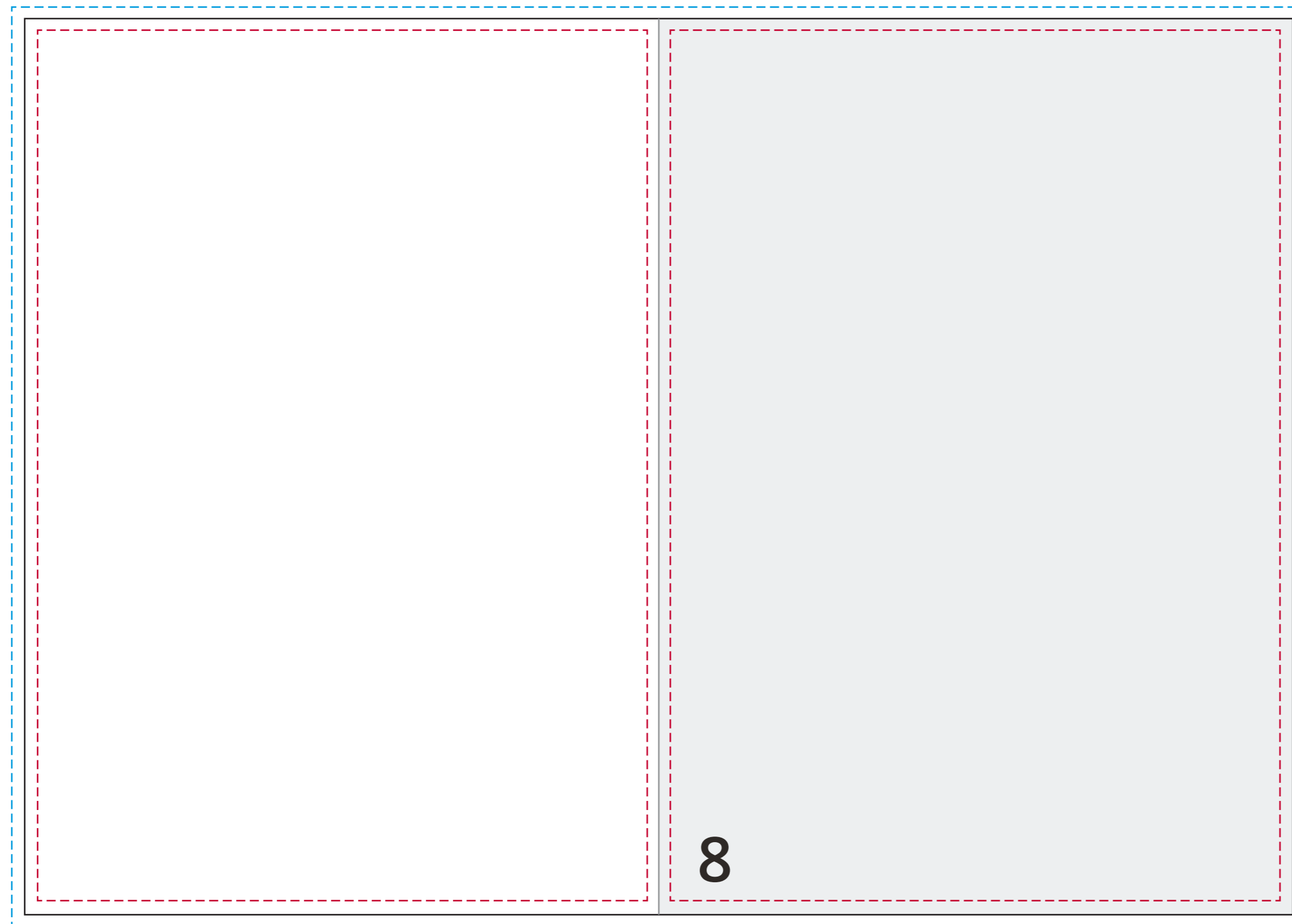
Artwork with NO BACKGROUND

Copy and group together the clipping shape with artwork of relevant side
Make this a symbol and map onto the correct side on page 1.

YOUR VISUAL PROOF (3 of 6)

Order Reference	xxxxxx
Date created	xx/xx/xx
Created by	xx

Print area	297 x 210 mm
Logo size	xx x xx mm
Branding	Full Colour



Back

Front

- Safe text area
- Bleed
- Cut line
- Folds

Visual Scale 100%

Artwork WITH BACKGROUND

Use the grey shape to clip a copy of the artwork and match it to the correct side of the 3D shape on page 1, **rasterize** (high and transparent) and make this into a symbol named '8'.

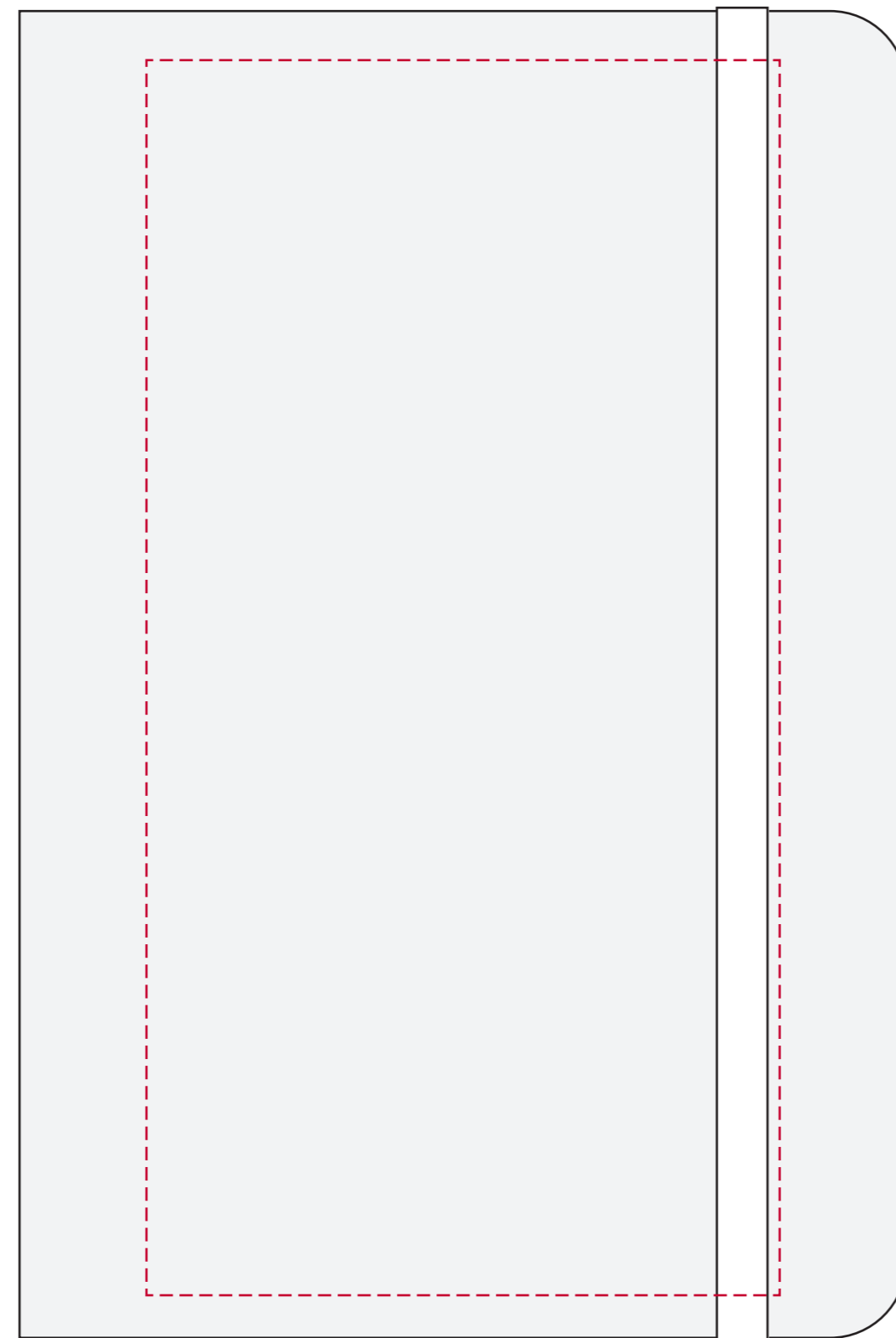
Ensure the artwork has been mapped on the correct way. (numbers are on the same corners of each shape on page 1 and 3)

Artwork with NO BACKGROUND

Copy and group together the clipping shape with the artwork.

Make this a symbol and map onto the correct side on page 1.

YOUR VISUAL PROOF (4 of 6)



Order Reference	xxxxxx
Date created	xx/xx/xx
Created by	xx

Print area	100 x 195 mm
Logo size	xx x xx mm
Branding	Spot Colour

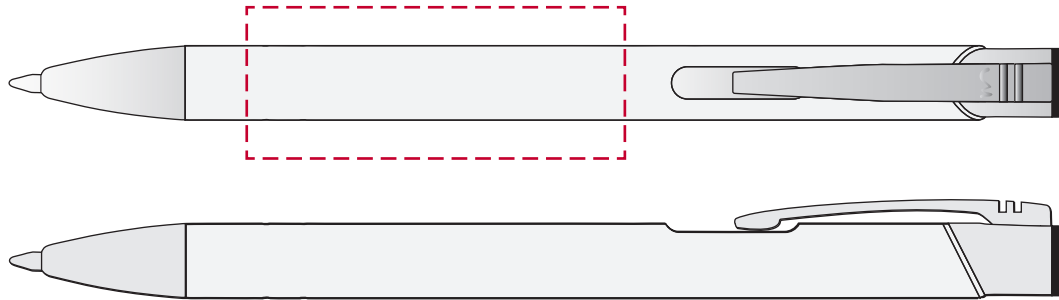
PANTONE® Colours



Visual Scale 100%

YOUR VISUAL PROOF (5 of 6)

If the artwork falls over the edge of the pen,
DO NOT create a warped version on this page.
Only create warped artwork on page 1.



Order Reference	xxxxxx
Date created	xx/xx/xx
Created by	xx

Print area	50 x 20 mm
Logo size	xx x xx mm
Branding	Spot Colour

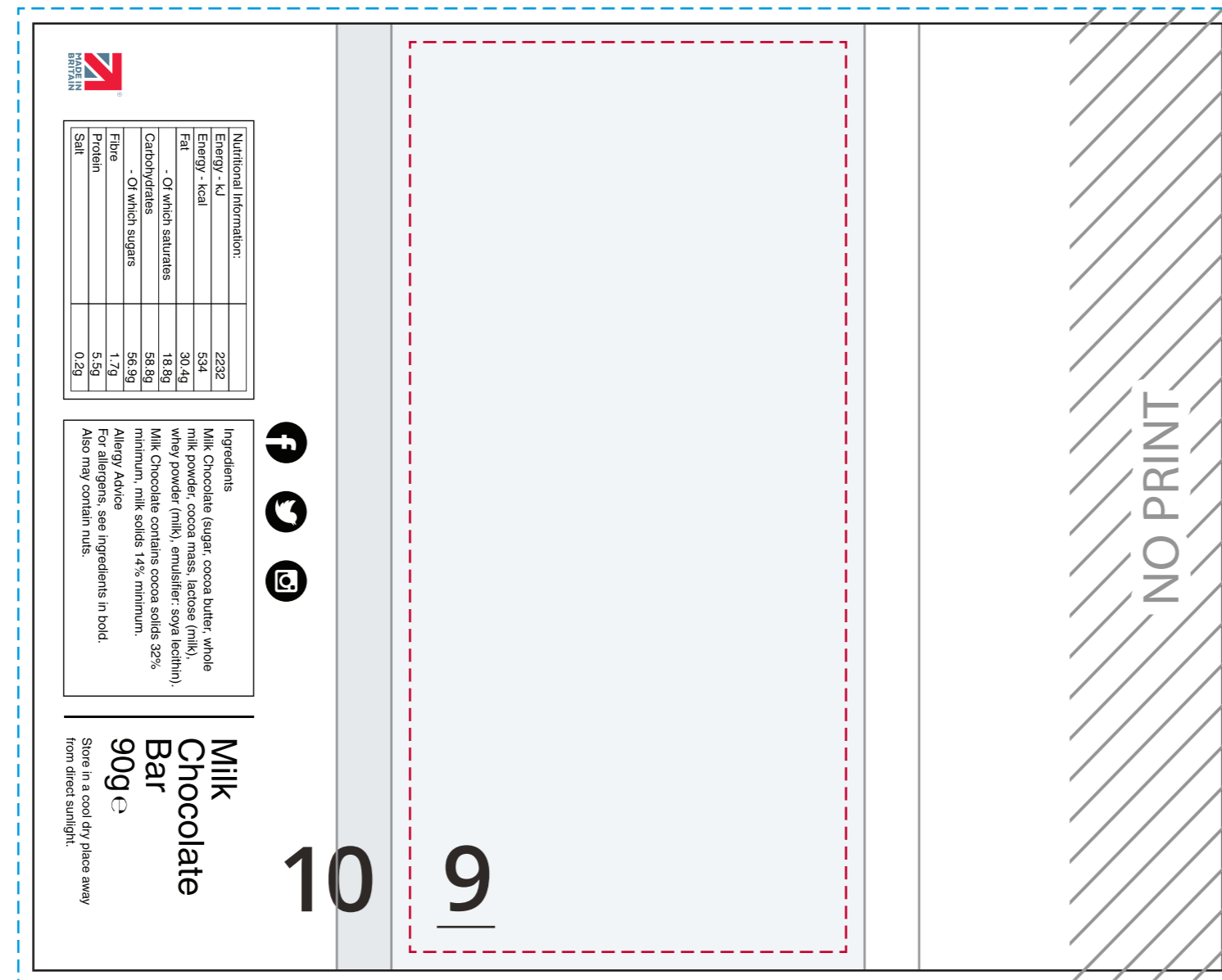
PANTONE® Colours



YOUR VISUAL PROOF (6 of 6)

Order Reference xxxxxx
 Date created xx/xx/xx
 Created by xx

Print area 198 x 159 mm
 Logo size xx x xx mm
 Branding Full Colour



Artwork WITH BACKGROUND

Use the grey shapes to clip copies of the artwork and match them to the correct sides of the 3D shape on page 1, **rasterize** (high and transparent) and make these into symbols named '9' and '10'.

Ensure the artwork has been mapped on the correct way. (numbers are on the same corners of each shape on page 1 and 6)

Artwork with NO BACKGROUND

Copy and group together the clipping shape with artwork of relevant side
 Make this a symbol and map onto the correct side on page 1.

- - - - - Safe text area
- - - - - Bleed
- Cut line
- Folds

Visual Scale 100%