

# YOUR VISUAL PROOF (1 of 2)

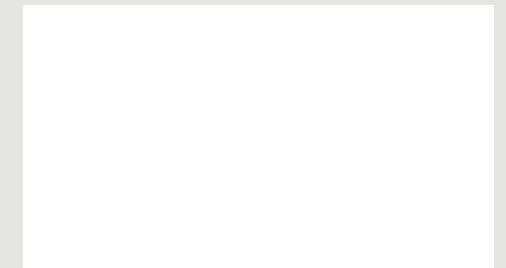


For Visual Purposes Only - Contents may vary. Please see page 2 for actual artwork size.

|                 |          |
|-----------------|----------|
| Order Reference | xxxxxx   |
| Date created    | xx/xx/xx |
| Created by      | xx       |

|          |             |
|----------|-------------|
| Product  | 235480      |
| Colour   | White       |
| Branding | Full Colour |

## Artwork Advisories

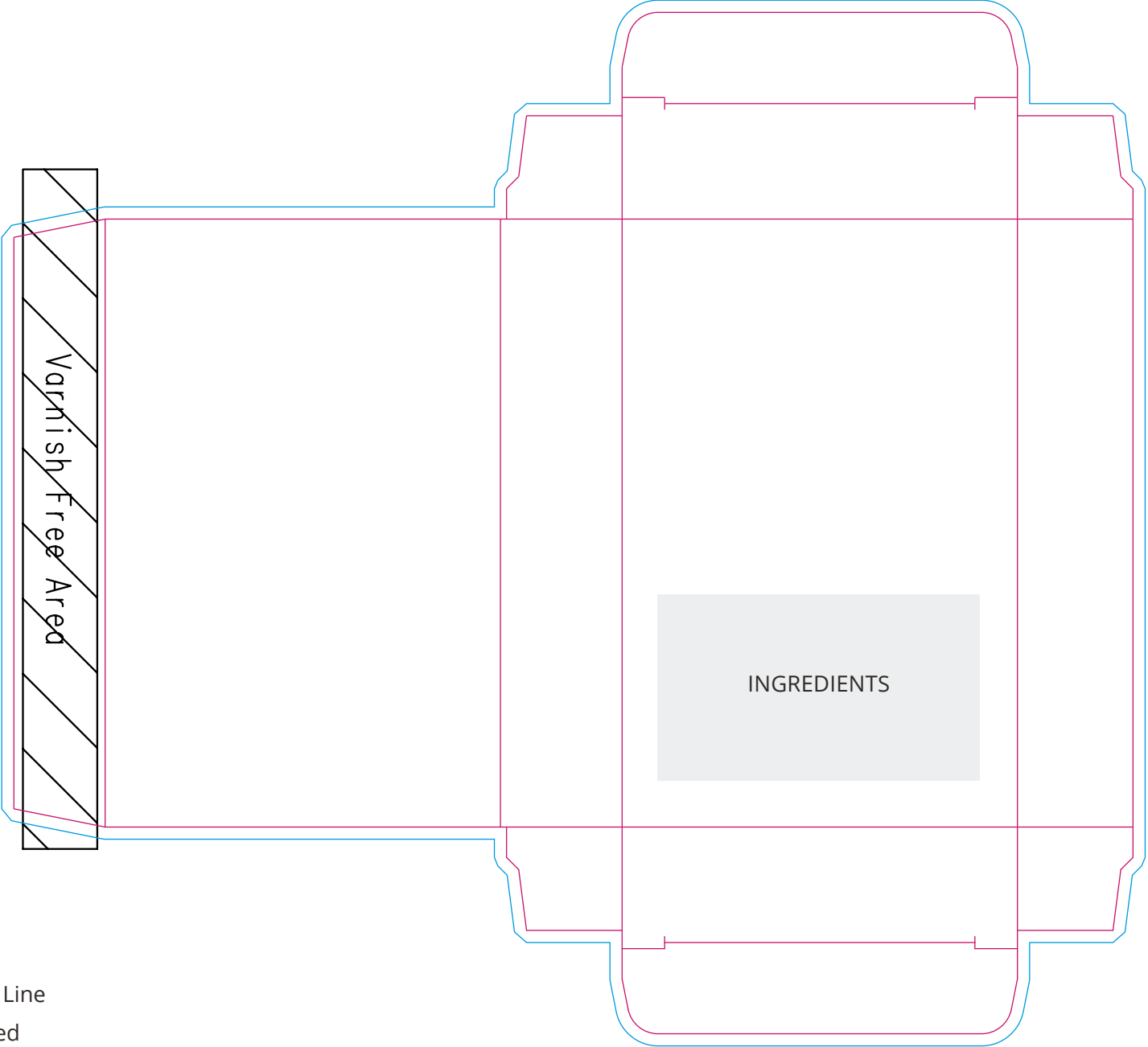


It is the customer's responsibility to ensure that the proof is correct in all areas. Please be sure to double-check spelling, grammar, layout and design before approving artwork. Due to the variation in monitor colours and adjustments, PDF proofs may not provide an accurate colour representation **of the final product & printed work**. Once artwork is approved, your order will be processed based on the above unless any amendments are made. All orders are subject to our terms and conditions.

Please email all approvals/amends to your **order processor**.

# YOUR VISUAL PROOF (2 of 2)

Order Reference xxxxxx  
Date created xx/xx/xx  
Created by xx



— Cut Line  
— Bleed

Print area 184 x 168 mm (entire box)  
Logo size xx x xxmm  
Branding Full Colour

Visual scale 100%.