

# YOUR VISUAL PROOF (1 of 2)



**For Visual Purposes Only.** Please see page 2 for actual artwork size.

Order Reference	xxxxxx
Date created	xx/xx/xx
Created by	xx

Product	235565
Colour	Clear
Flavour	Pop n Choc
Branding	Full Colour (Label)

## Artwork Advisories

Full colour printed colours may differ when printed to the final product.

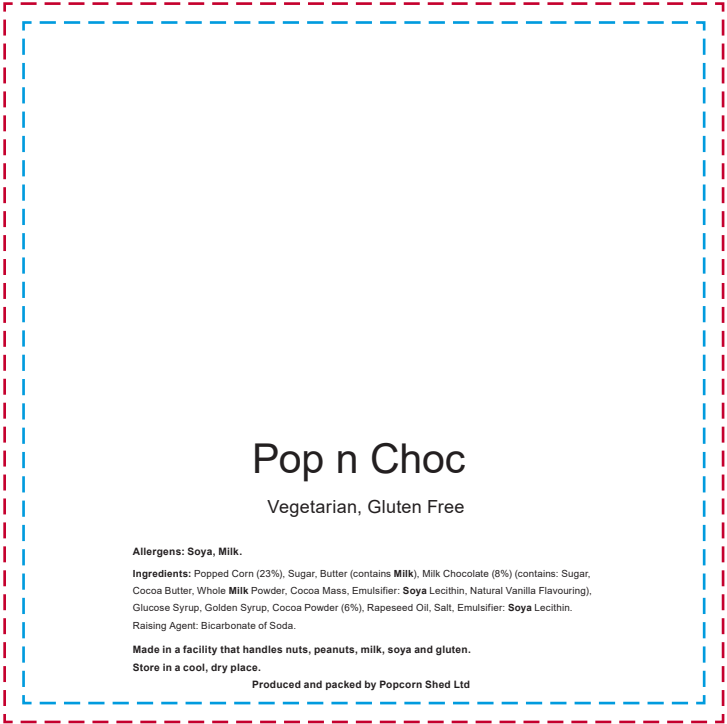
It is the customer's responsibility to ensure that the proof is correct in all areas. Please be sure to double-check spelling, grammar, layout and design before approving artwork. Due to the variation in monitor colours and adjustments, PDF proofs may not provide an accurate colour representation **of the final product & printed work.** Once artwork is approved, your order will be processed based on the above unless any amendments are made. All orders are subject to our terms and conditions.

Please email all approvals/amends to your **order processor.**

# YOUR VISUAL PROOF (2 of 2)

Order Reference xxxxxx  
Date created xx/xx/xx  
Created by xx

Print area 95 x 95 mm  
Logo size xx x xxmm  
Branding Full Colour (Label)



--- Print area  
--- Safe Text Area

Visual scale 100%.