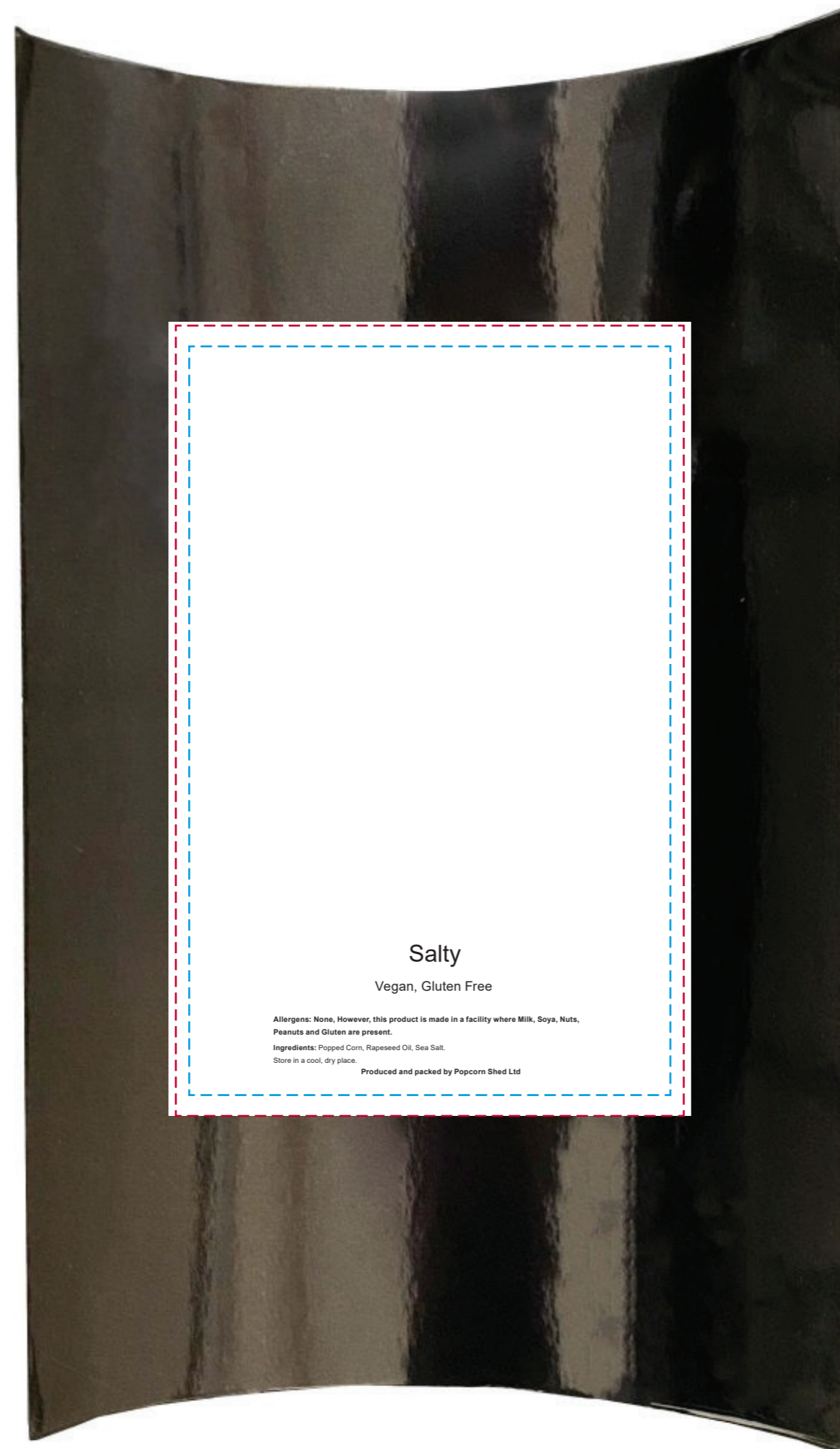


YOUR VISUAL PROOF (1 of 2)



| | |
|-----------------|----------|
| Order Reference | xxxxxx |
| Date created | xx/xx/xx |
| Created by | xx |

| | |
|----------|---------------------|
| Product | 235751 |
| Colour | Black |
| Flavour | Salty |
| Branding | Full Colour (Label) |

Artwork Advisories

Full colour printed colours may differ when printed to the final product.

It is the customer's responsibility to ensure that the proof is correct in all areas. Please be sure to double-check spelling, grammar, layout and design before approving artwork. Due to the variation in monitor colours and adjustments, PDF proofs may not provide an accurate colour representation **of the final product & printed work**. Once artwork is approved, your order will be processed based on the above unless any amendments are made. All orders are subject to our terms and conditions.

Please email all approvals/amends to your **order processor**.

For Visual Purposes Only. Please see page 2 for actual artwork size.

YOUR VISUAL PROOF (2 of 2)



- Print Area
- Safe Text Area

Visual scale 100%.

| | |
|-----------------|----------|
| Order Reference | xxxxxx |
| Date created | xx/xx/xx |
| Created by | xx |

| | |
|------------|---------------------|
| Print area | 95 x 140 mm |
| Logo size | xx x xxmm |
| Branding | Full Colour (label) |